

COSHH CABINETS



CoSHH cabinets are designed for the secure storage of hazardous substances. The dark grey paint finish is highly visible & indicative of chemicals being stored.

GENERAL INFO & FEATURES

- Compliant with CoSHH Regulations
- 1.2mm fully welded integral sump
- Spill retaining adjustable galvanised shelves
- Secure 2 - point locking systems - Supplied with 2 keys
- 70kg UDL shelf capacity

PAINT FINISHES

- Three stage pre-treatment and phosphate coating,
- Carcass & doors powder coated with one coat epoxy polyester full gloss powder
- Includes Germ Guard Anti-Bacterial Compound



Optional stands available



2-Point locking system

DGY
Dark Grey - RAL 7024

CLASSIFICATIONS

- Fire Classification EN 13501-1
- ISO 9001:2015

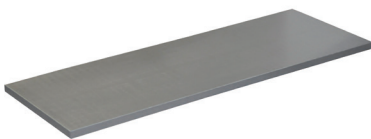
CONSTRUCTION

- 0.7mm mild steel part-weld part-riveted body
- 0.9mm mild steel stiffened cabinet doors

LABEL



EXTRA SHELVES



- Available for all floor cabinet sizes
- Galvanised spill retaining shelves
- Manufactured from mild steel
- Fire Classification EN 13501-1 & ISO 9001:2015



COSHH CABINETS

EXTERNAL DIMENSIONS

Height

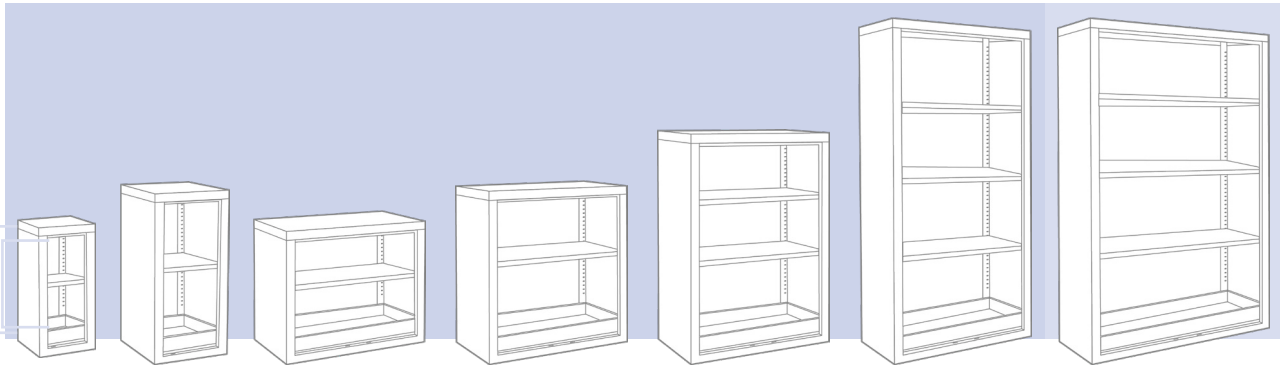
1800
1200
900
700



Width	350mm	460mm	900mm	900mm	900mm	900mm	1200mm
Depth	300mm	460mm					
SKU	34021205	34021203	34021206	34021204	34021202	34021200	34021201
Sump Capacity	3L	7L	14L	14L	14L	14L	18L
Weight	12kg	20kg	22kg	29kg	34kg	48kg	58kg
Shelves	1	1	1	1	2	3	3

INTERNAL DIMENSIONS

Internal
Open Entry



Internal Height	698mm	898mm	698mm	898mm	1198mm	1798mm	1198mm
Internal Width	346mm	446mm	896mm	896mm	896mm	896mm	1196mm
Internal Depth	285mm	435mm	435mm	435mm	435mm	435mm	435mm
Open Entry H x W	500 x 225mm	700 x 325mm	500 x 775mm	700 x 775mm	1000 x 775mm	1600 x 775mm	1600 x 775mm
Shelves	1	1	1	1	2	3	3

COSHH CABINETS

EXTENDED RANGE & ACCESSORIES



WALL CABINETS

- No sump fitted, pre drilled for wall fixing

H x W x D mm
570 x 850 x 255



MOBILE CABINETS

- Ideal for transporting hazardous substances

H x W x D mm
840 x 900 x 460
1040 x 900 x 460



CABINET STANDS

- With adjustable foot for uneven floors

H x W x D mm
500 x 350 x 300
500 x 460 x 460
500 x 900 x 460

MAINTENANCE

- Clean cabinet paint work periodically with warm soapy water
- Oil hinges and lock sparingly as required with light oil (3in1 or similar)

SPARES

- Replacement locks available from Workplace
- Spare keys from Fast Key Service LTD
www.fastkeys.co.uk

